

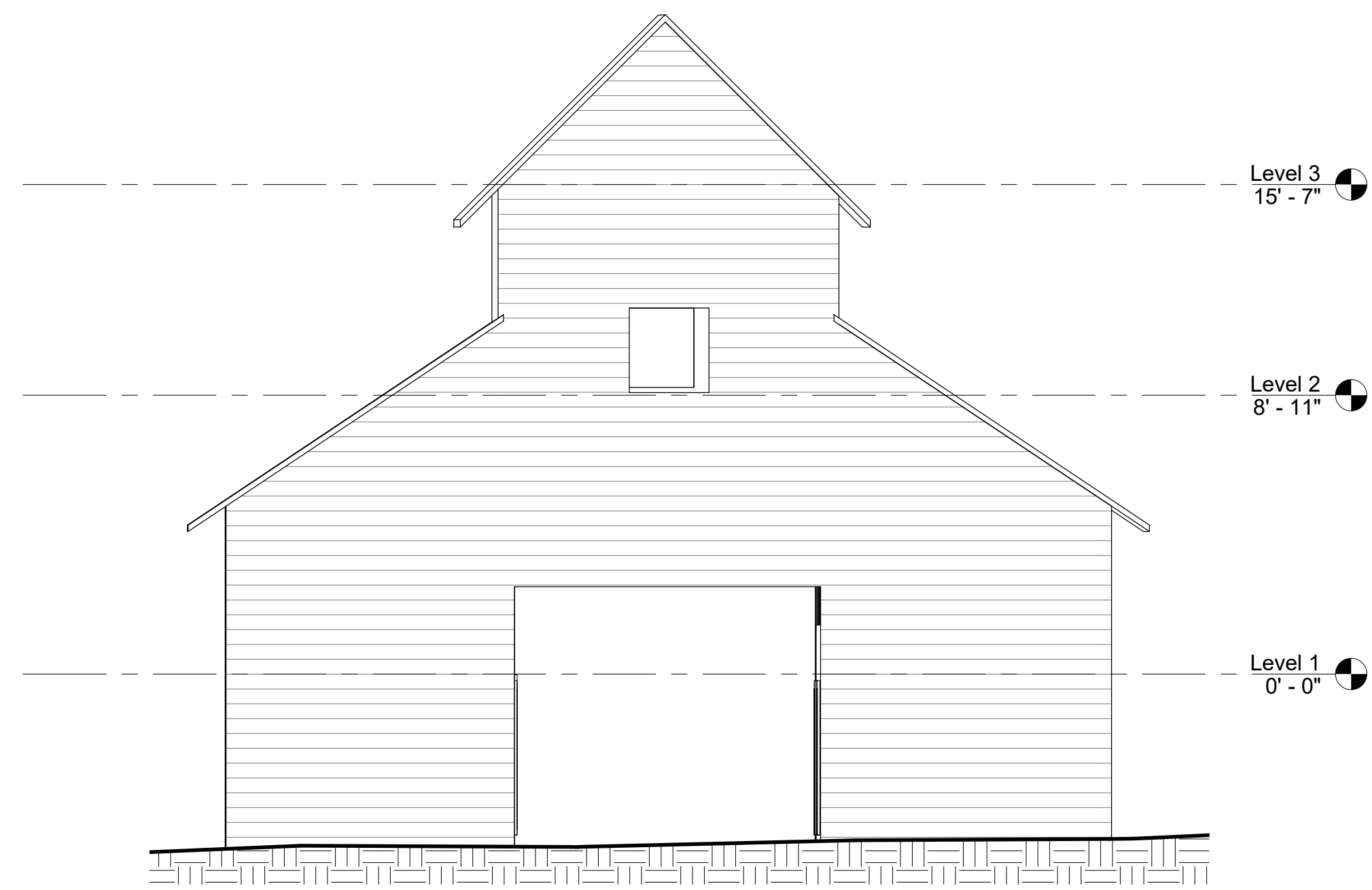


① East
1/4" = 1'-0"

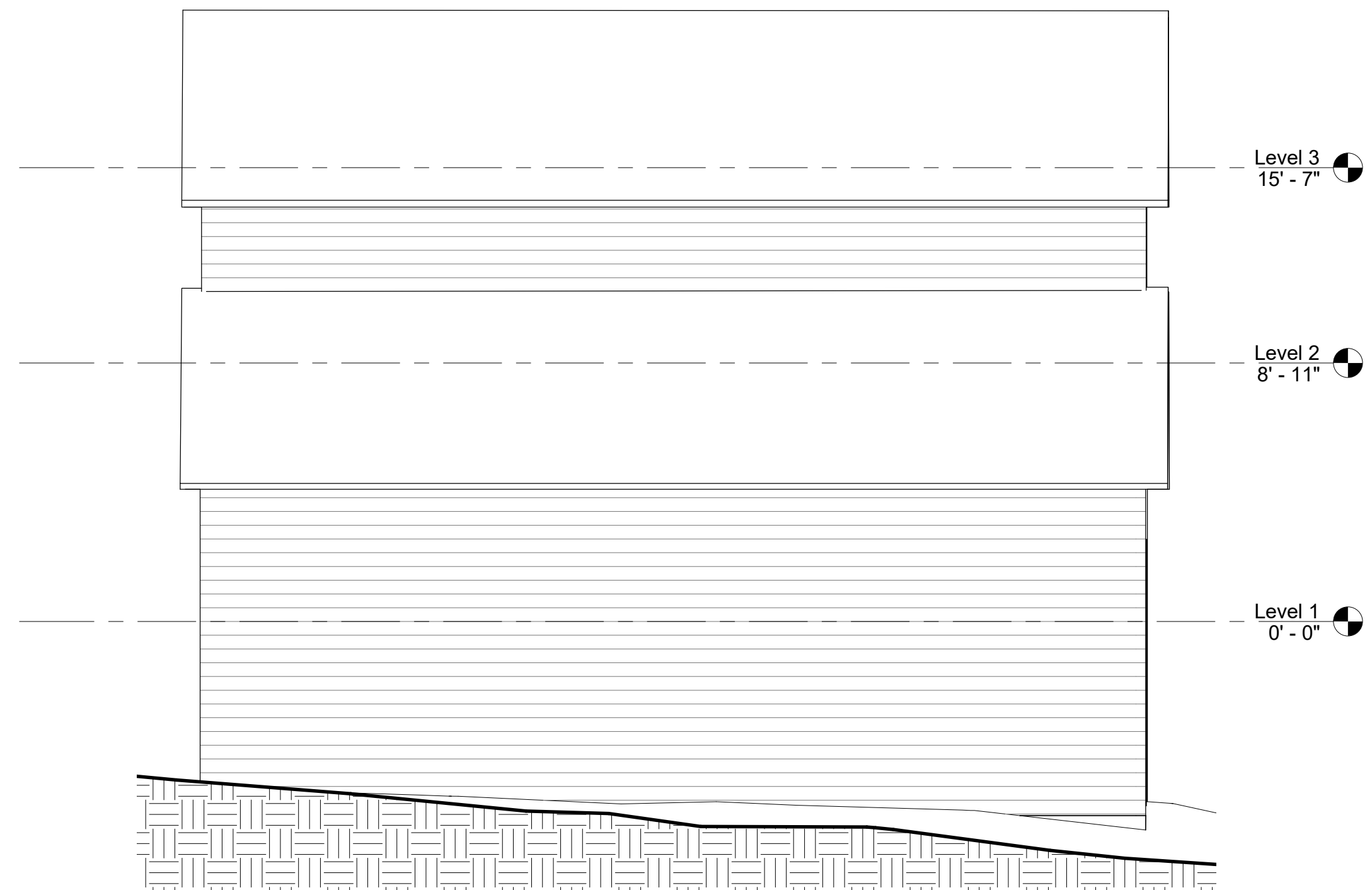


② West
1/4" = 1'-0"

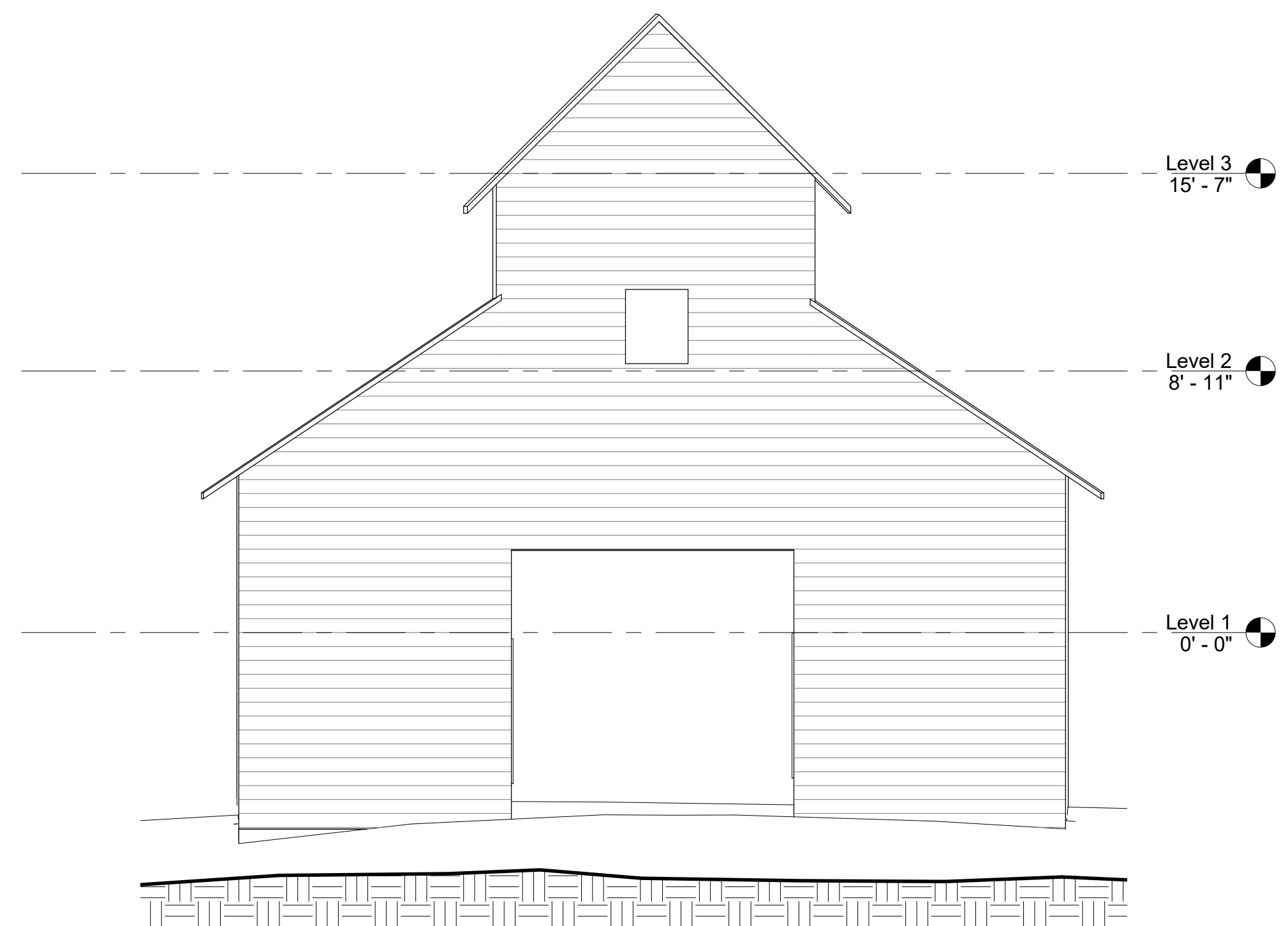
Atlanta Movie	
Elevation - East & West	
Project number	Project Number
Date	Issue Date
Drawn by	Author
Checked by	Checker
A103	
Scale	1/4" = 1'-0"



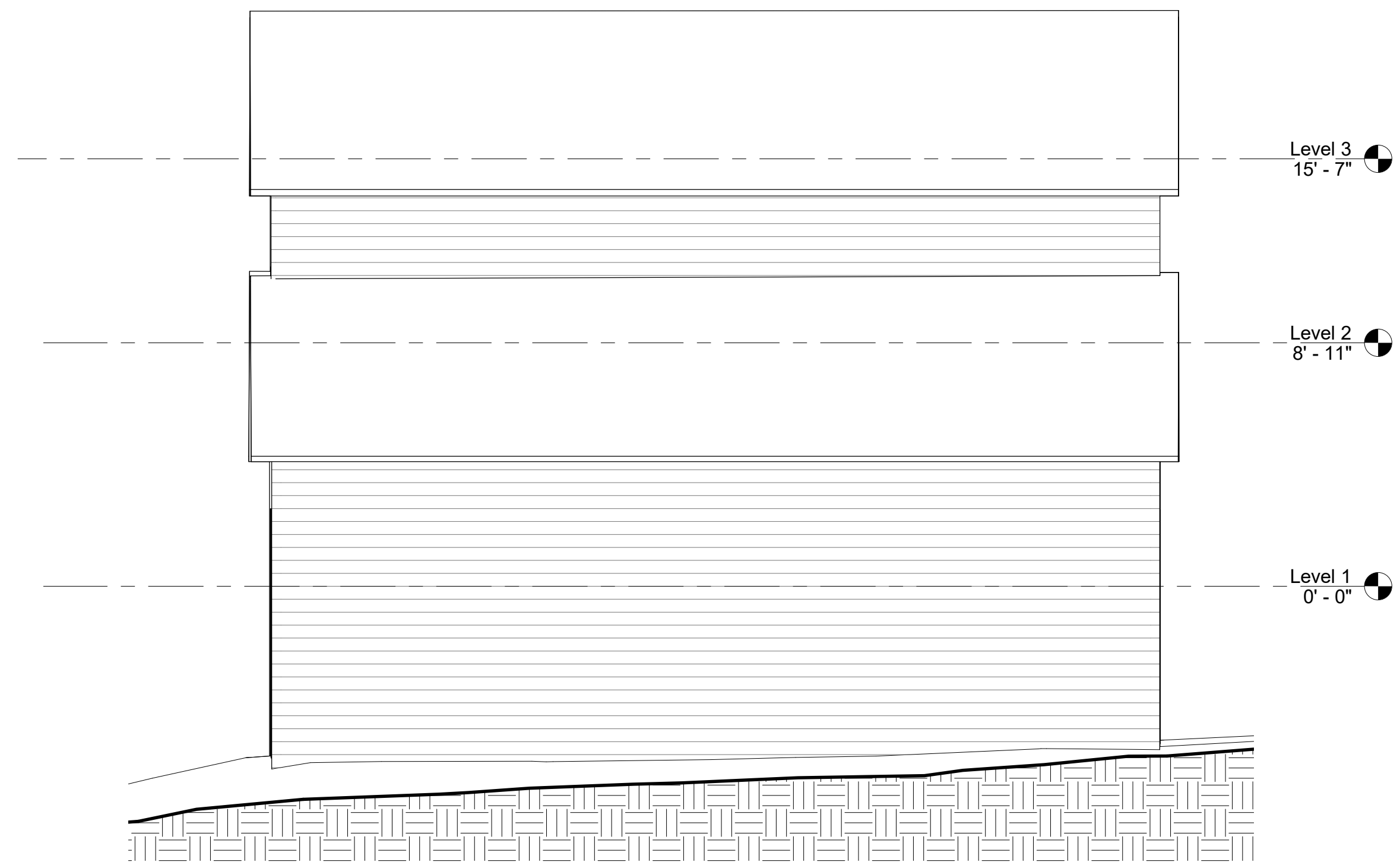
① W1 - E1
1/4" = 1'-0"



② W1 - E2
1/4" = 1'-0"

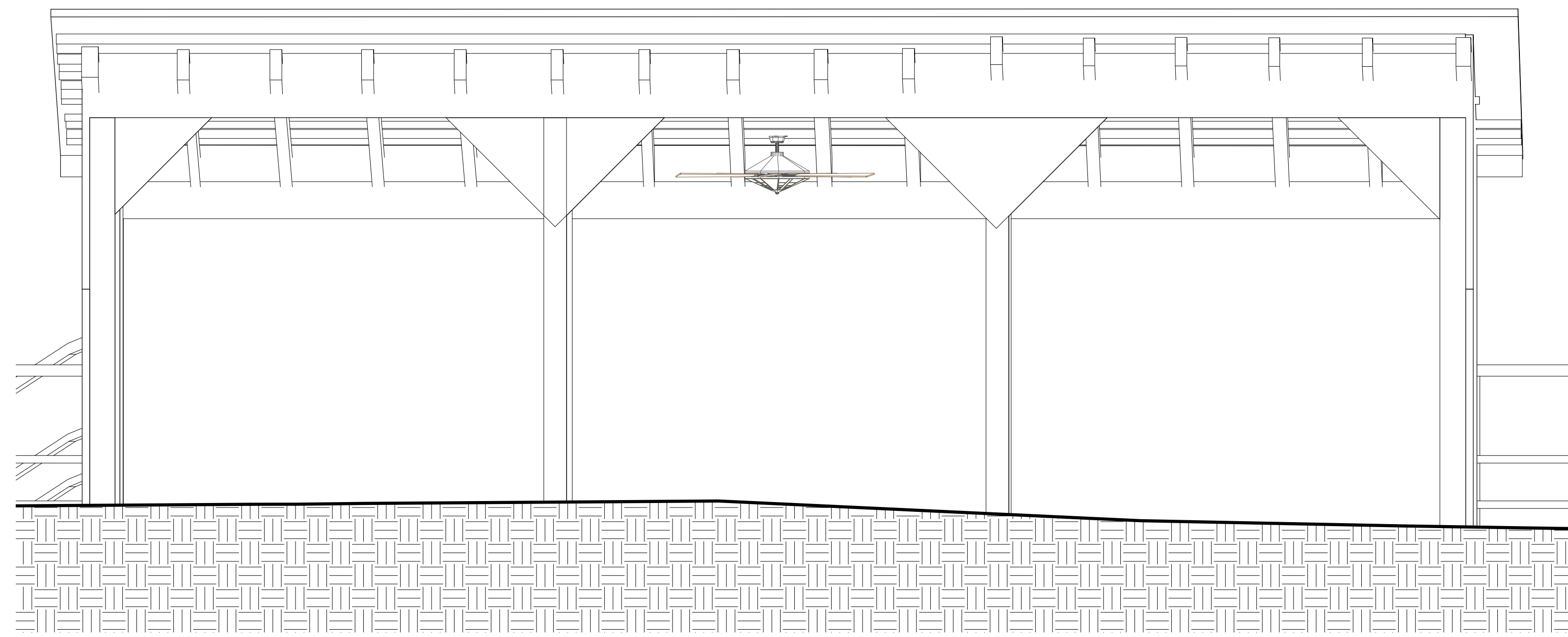


③ W1 - E3
1/4" = 1'-0"

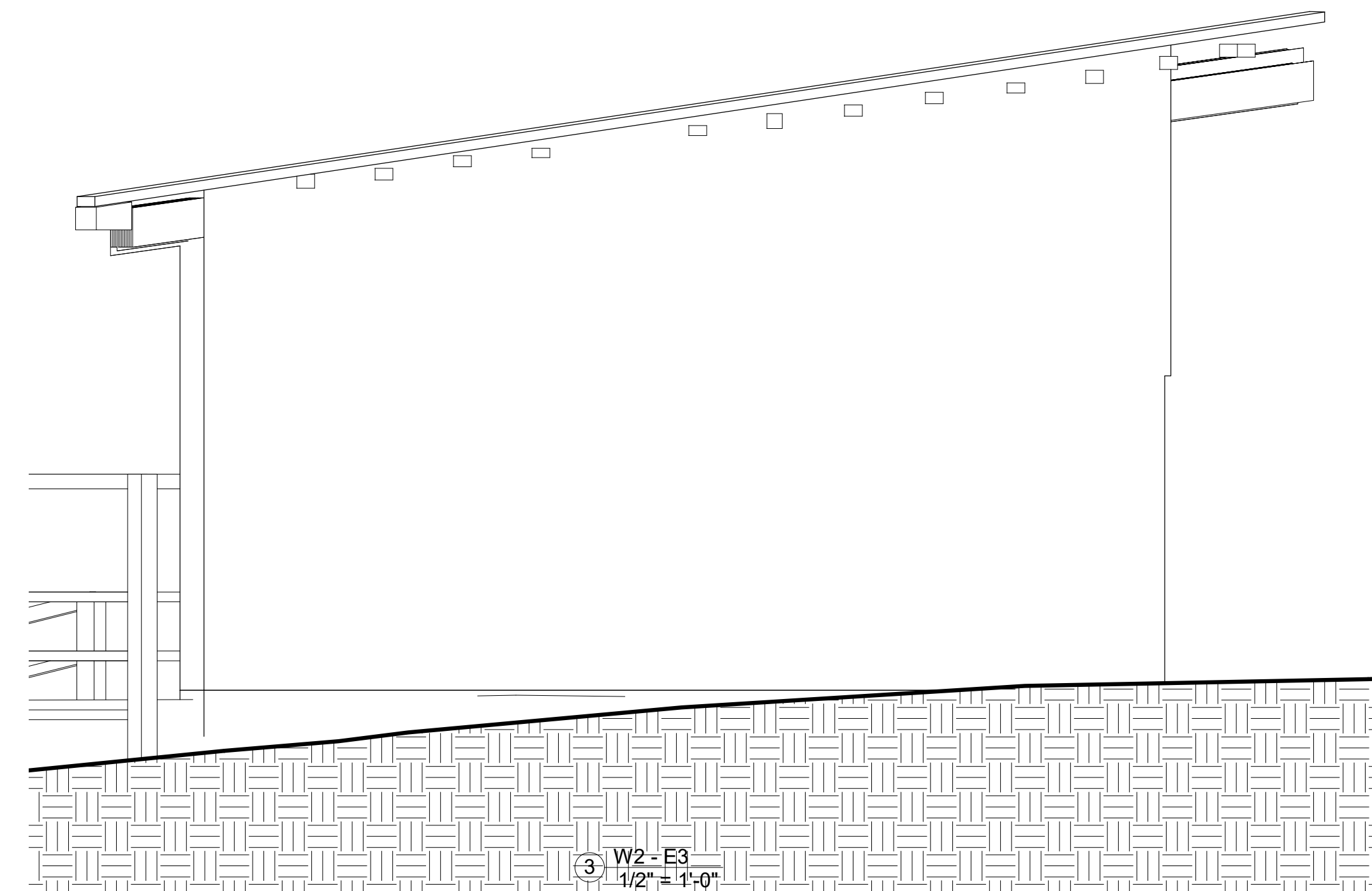


④ W1 - E4
1/4" = 1'-0"

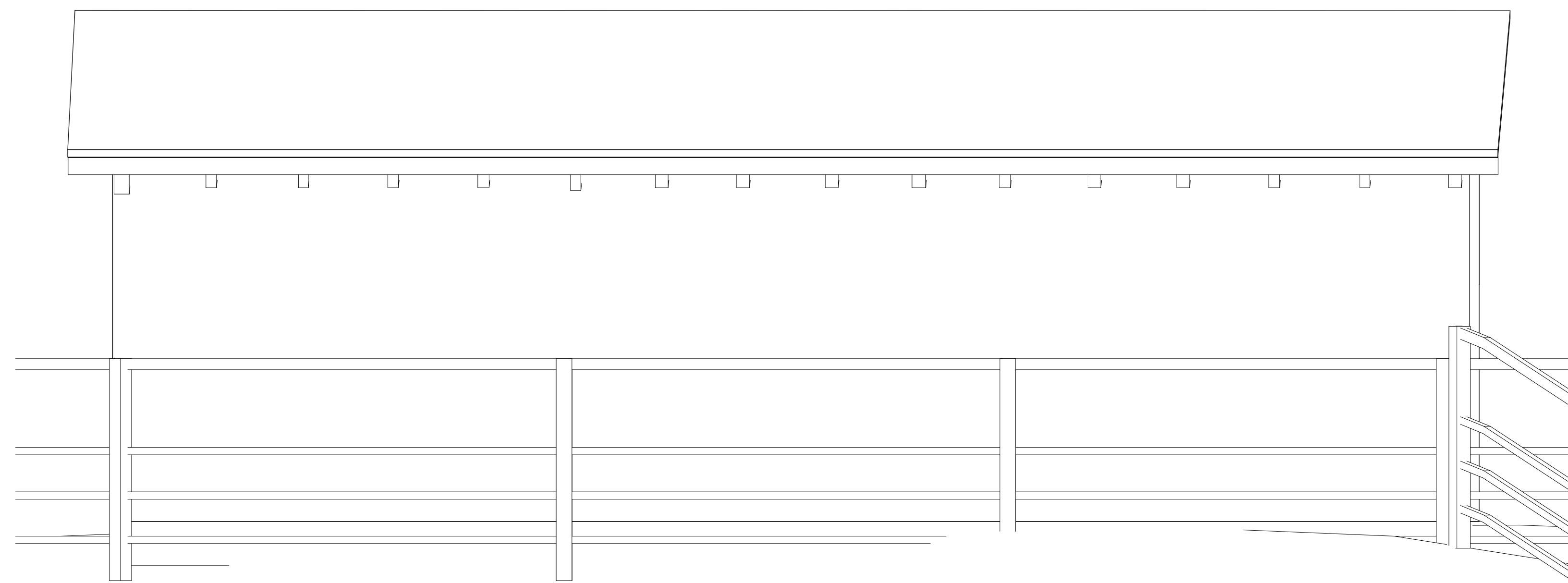
Atlanta Movie	
Warehouse-1 - Elevations	
Project number	Project Number
Date	Issue Date
Drawn by	Author
Checked by	Checker
A106	
Scale	1/4" = 1'-0"



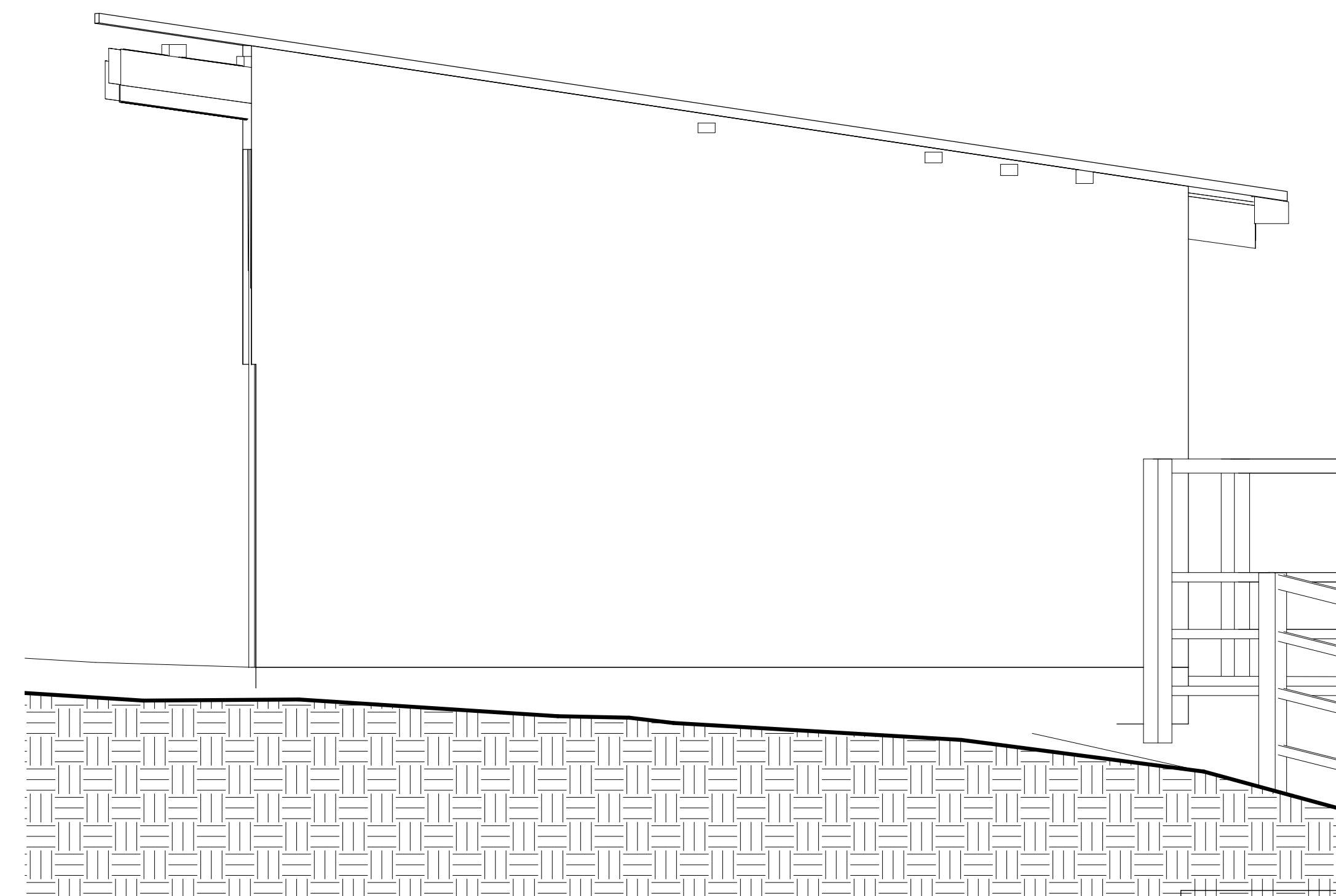
① W2 - E1
1/2" = 1'-0"



③ W2 - E3
1/2" = 1'-0"



② W2 - E2
1/2" = 1'-0"



④ W2 - E4
1/2" = 1'-0"

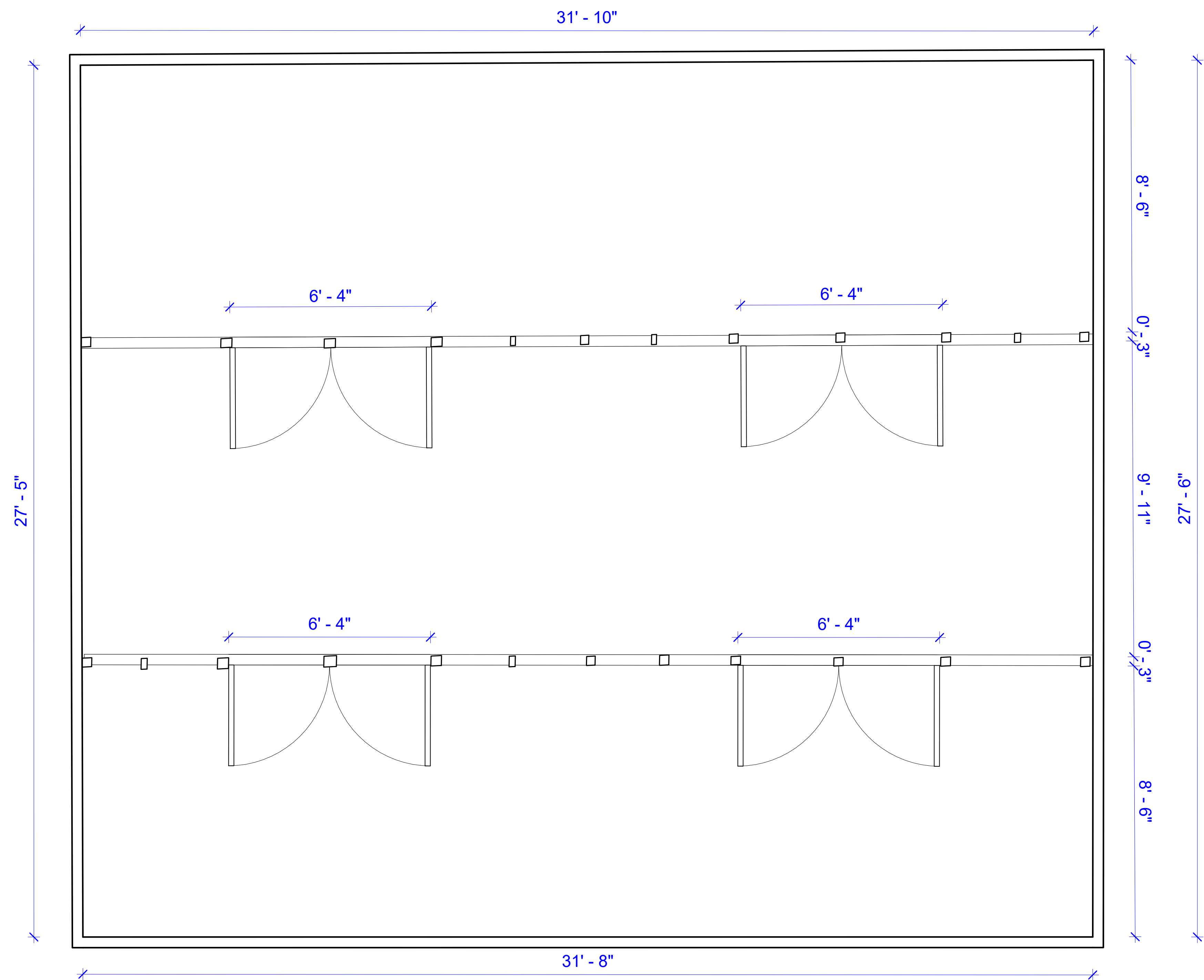
Atlanta Movie

Warehouse-2 -
Elevations

Project number	Project Number
Date	Issue Date
Drawn by	Author
Checked by	Checker

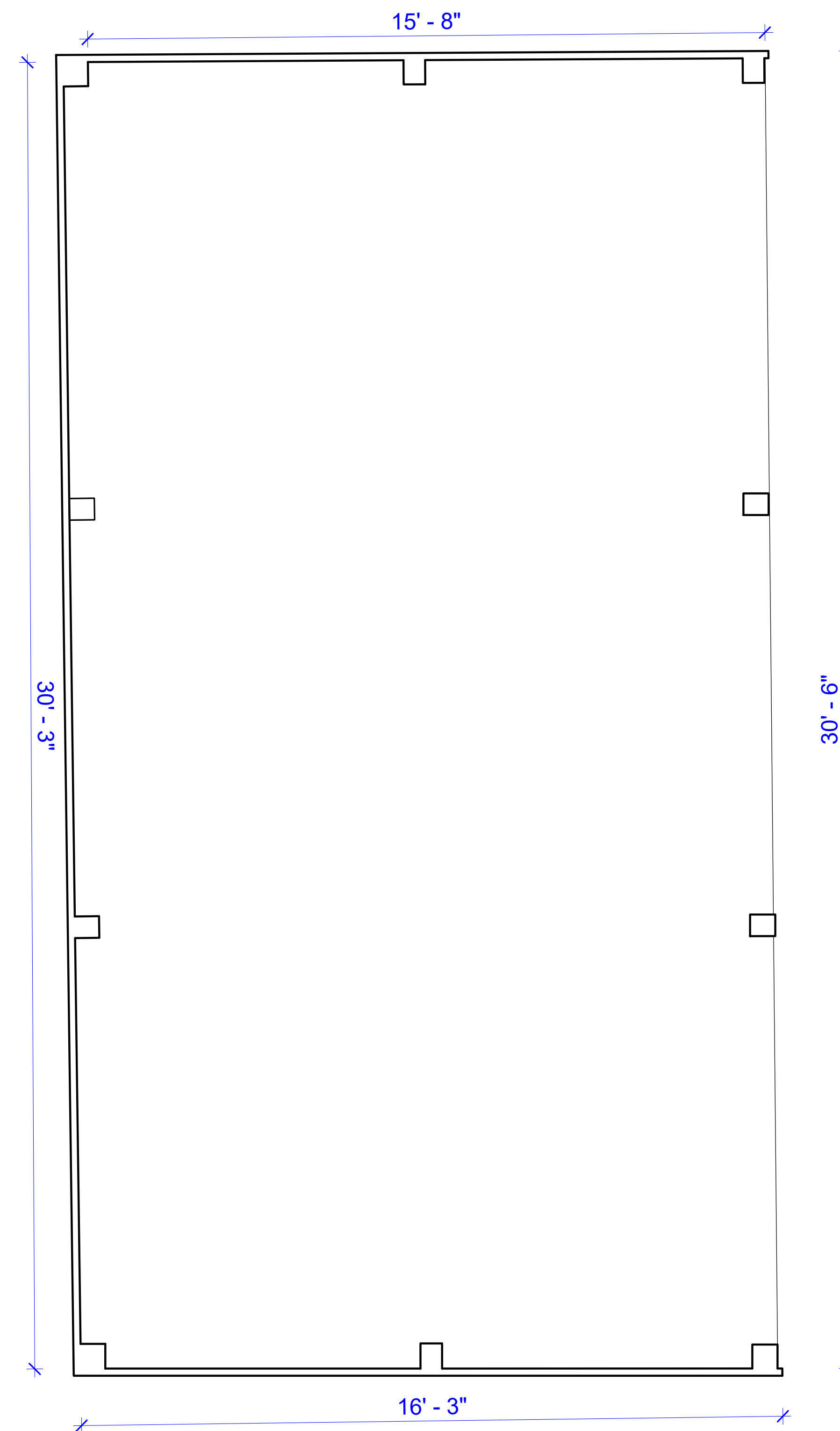
A108

Scale 1/2" = 1'-0"



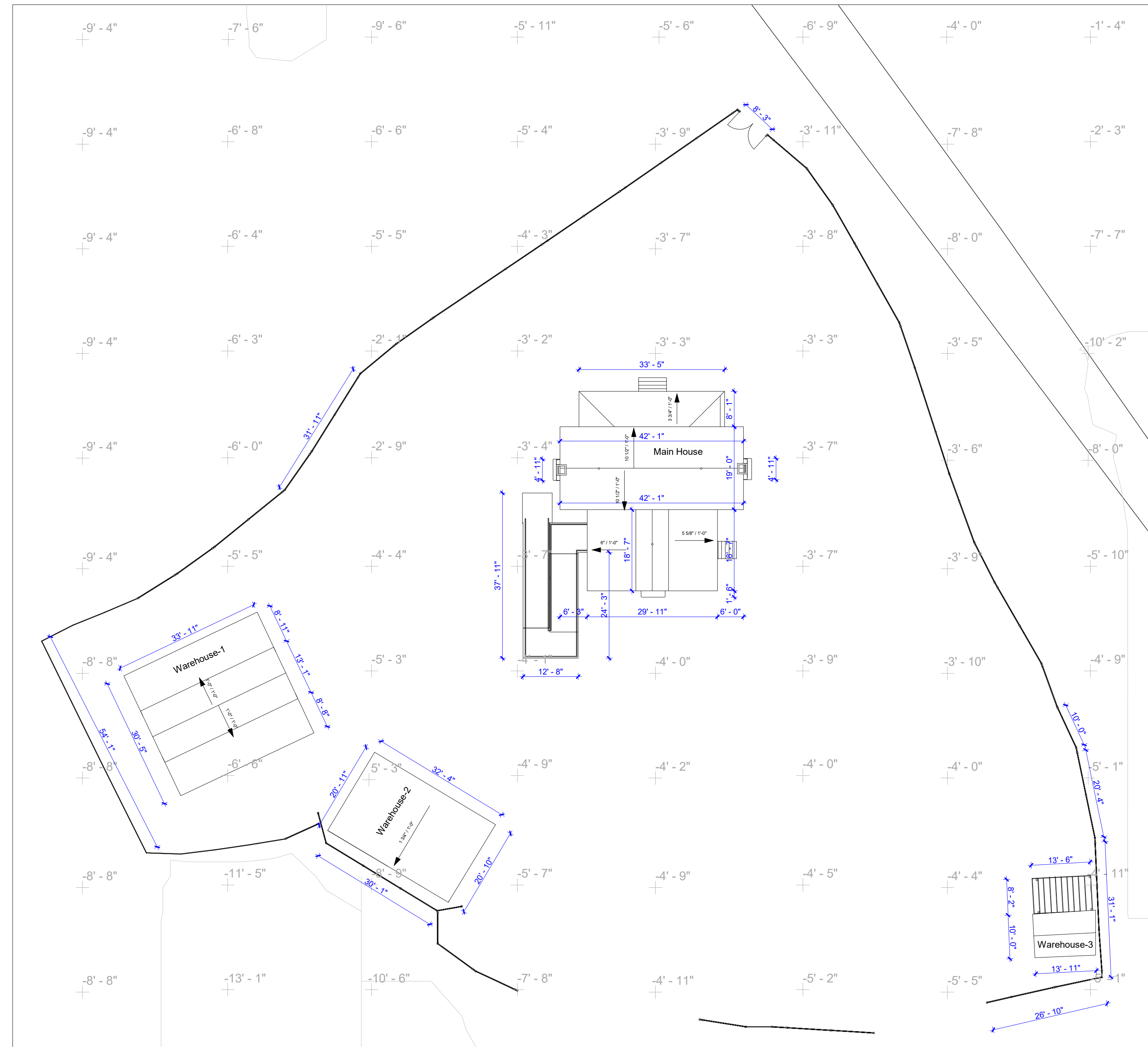
① Warehouse - 01
1/2" = 1'-0"

Atlanta Movie	
Warehouse - 01	
Project number	Project Number
Date	Issue Date
Drawn by	Author
Checked by	Checker
A105	
Scale	1/2" = 1'-0"



① Warehouse - 02
1/2" = 1'-0"

Atlanta Movie	
Warehouse - 02	
Project number	Project Number
Date	Issue Date
Drawn by	Author
Checked by	Checker
A107	
Scale	1/2" = 1'-0"



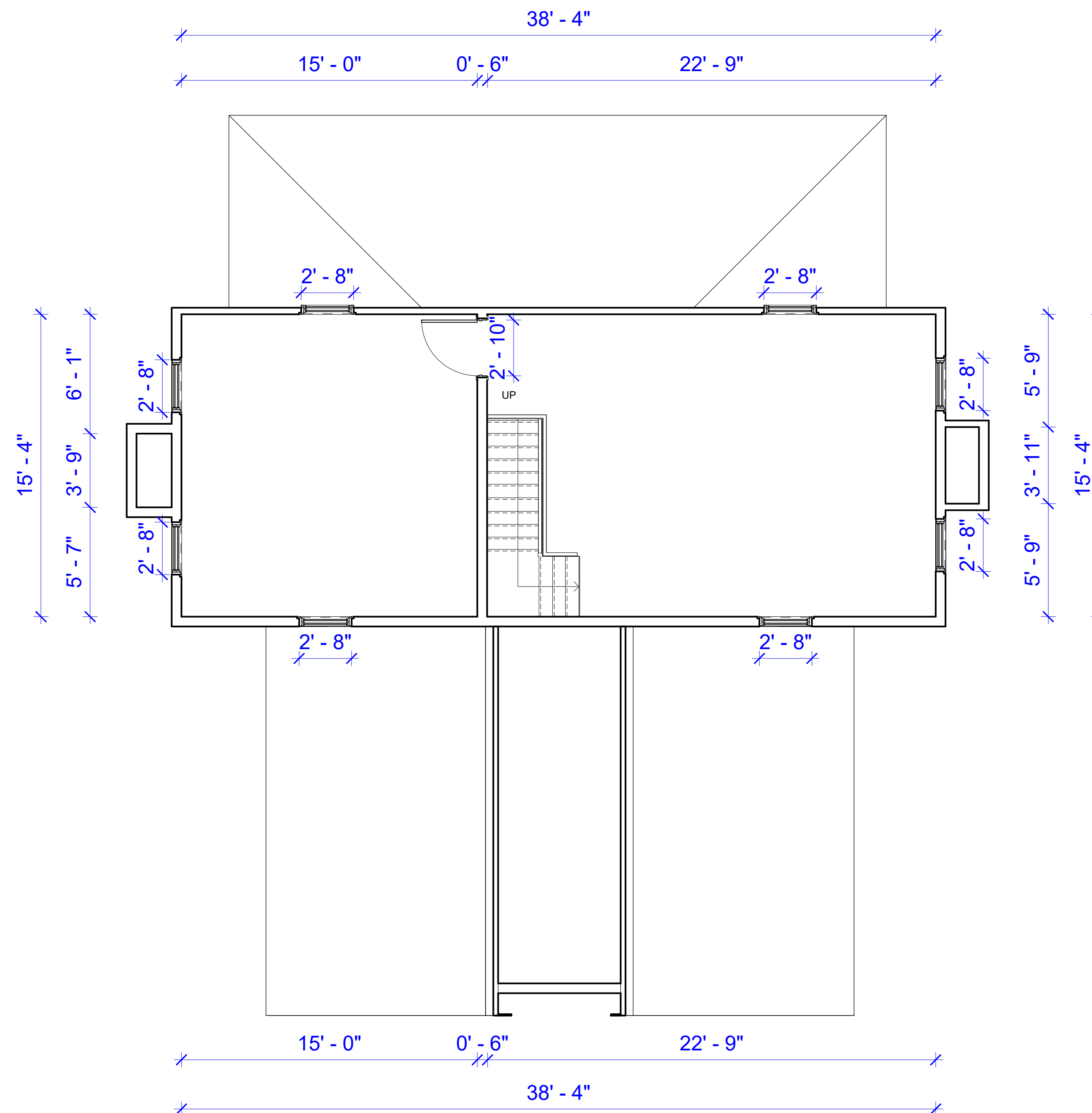
1 Site
1/16" = 1'-0"

Atlanta Movie
Site Plan

Project number	Project Number
Date	Issue Date
Drawn by	Author
Checked by	Checker

A109

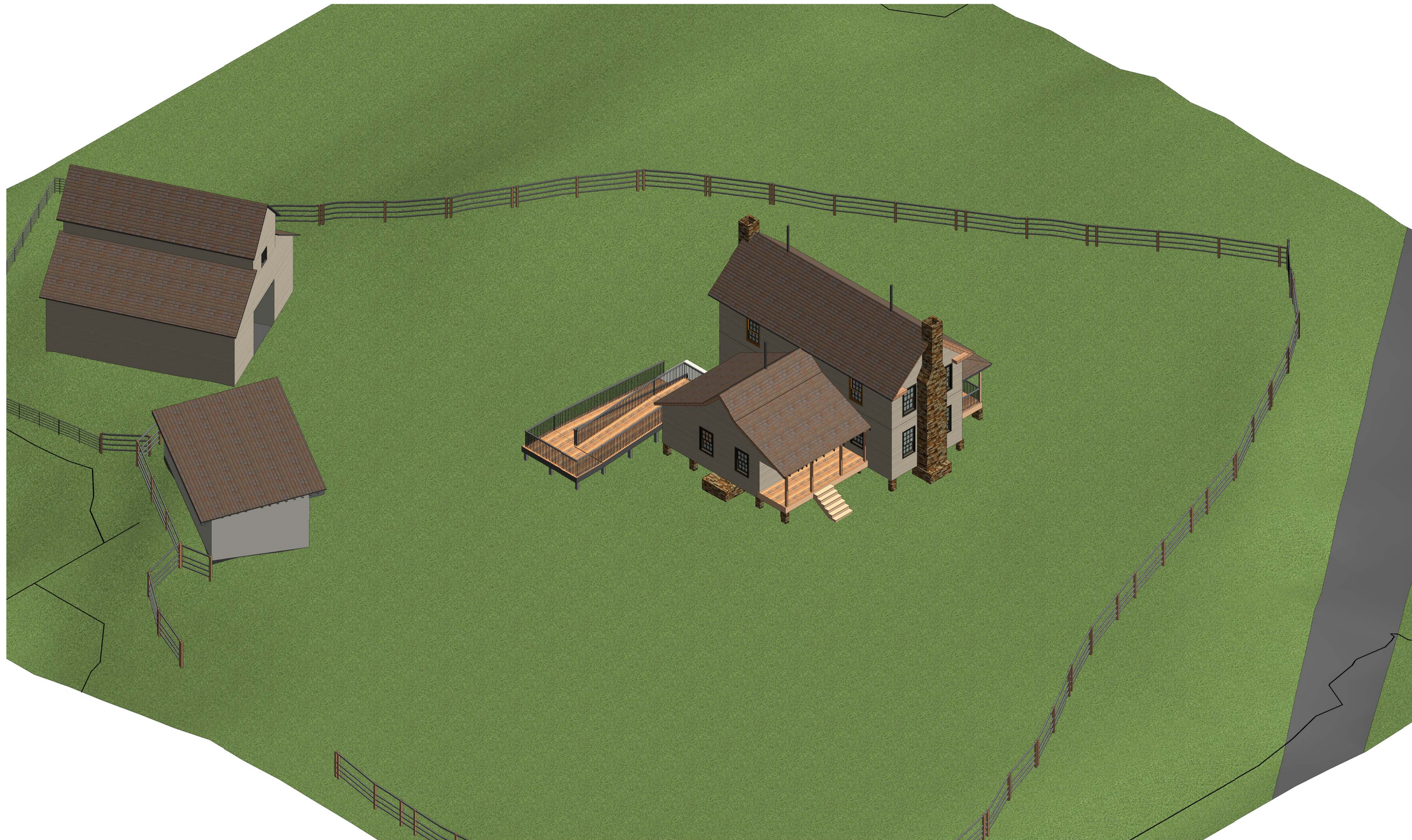
Scale	1/16" = 1'-0"
-------	---------------



① Level 2
1/4" = 1'-0"

Atlanta Movie
Floor Plan - 02

Project number	Project Number
Date	Issue Date
Drawn by	Author
Checked by	Checker
A102	
Scale	1/4" = 1'-0"



① 3D View

Atlanta Movie	
3D View	
Project number	Project Number
Date	Issue Date
Drawn by	Author
Checked by	Checker
A110	
Scale	